



Stoneacre
Properties



Eyres Mill Side, Leeds, LS12 3DL
£750 (From) Per Calendar Month

*** APARTMENT IN CONVERTED MILL DEVELOPMENT ***

Stoneacre Properties are bringing to market this well presented one bedroom flat situated within a converted mill development. Located on the first floor, this beautiful apartment briefly comprises Lounge, Kitchen, double bedroom and shower room. Situated on Eyres Mill Side the property is only a short distance from Leeds City Centre. To arrange a viewing, Please contact Stoneacre Properties.

AVAILABLE NOW

HALLWAY

Front door of the flat leads into the Hallway which offers access to the integrated storage cupboards, Lounge, Bedroom, and Bathroom.

LOUNGE/KITCHEN 17'6" x 17'0" (5.34 x 5.2)

Lounge/Kitchen offers space for formal seating area, dining area, and Kitchen.

BEDROOM

Double bedroom laid to carpet.

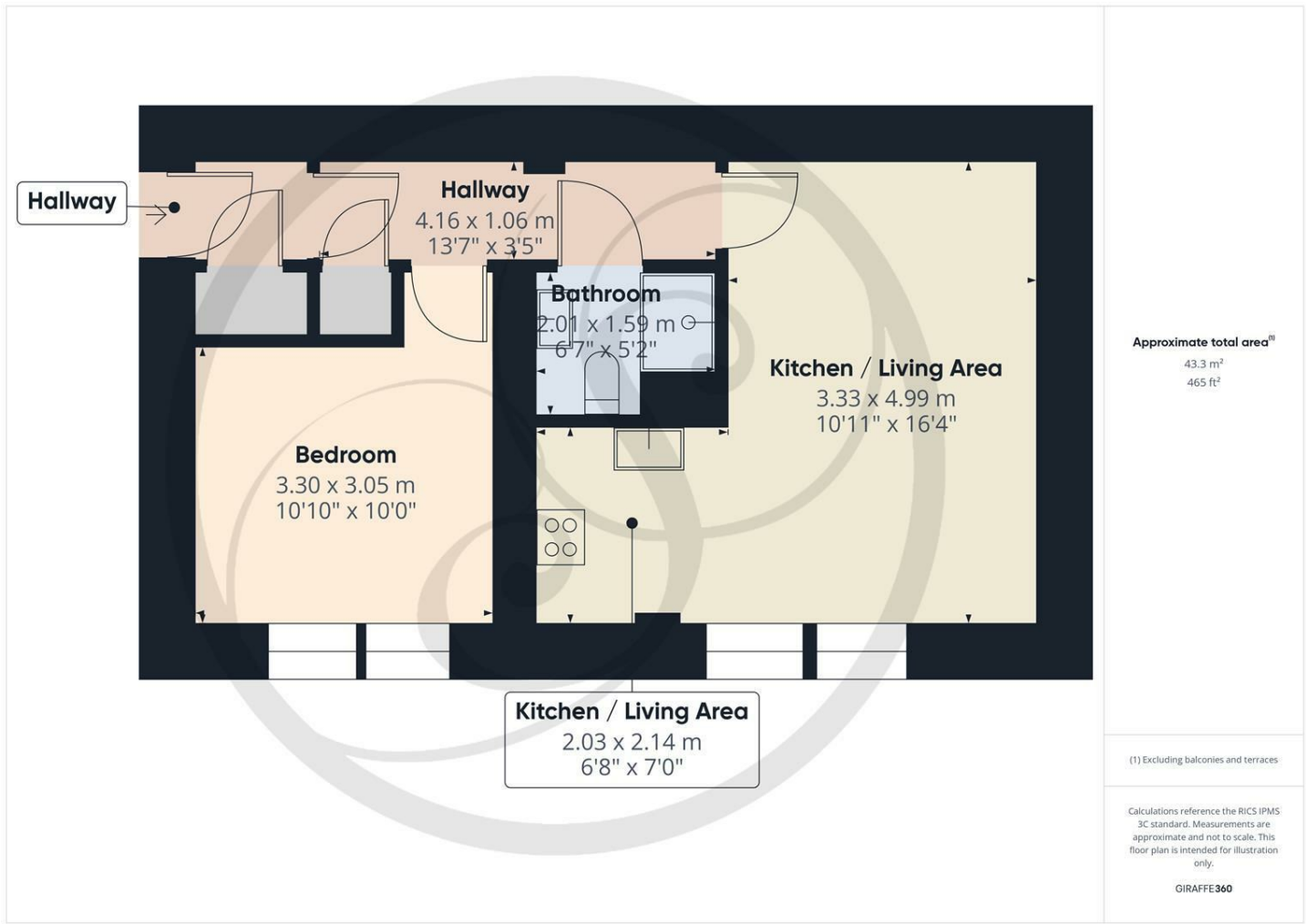
BATHROOM

Modern style bathroom is made up of walk in shower, toilet and sink.

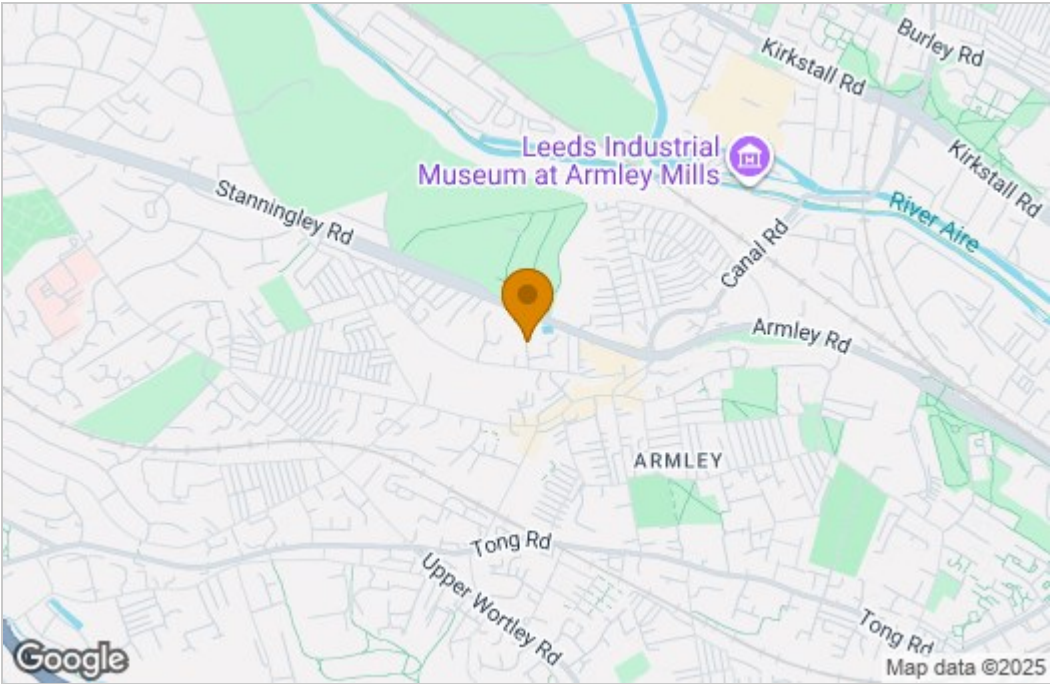
EXTERNAL

Property comes with an allocated parking space.

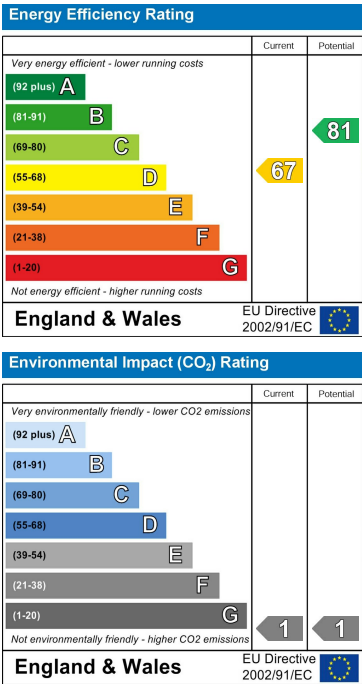
Floor Plan



Area Map



Energy Efficiency Graph



These particulars, whilst believed to be accurate are set out as a general outline only for guidance and do not constitute any part of an offer or contract. Intending purchasers should not rely on them as statements of representation of fact, but must satisfy themselves by inspection or otherwise as to their accuracy. No person in this firm's employment has the authority to make or give any representation or warranty in respect of the property.

